



Description:
The fibre optic projector shall be suitable for most interior projects, with a ported ventilation system to give an acoustic rating of 31 dbA. It shall have a 150WHQI lamp with a purpose designed dichroic reflector. The internal design will allow for one or two colour/effect wheels to be fitted, with synchronisation or 0-10V/DMX control of these wheels a further option. It will be fitted with electronic control gear to ensure 'soft' start for the lamp and help to extend the life of the lamp. The thermal design will allow use of Glass or PMMA fibre optic harnesses.

CRE6155E Fibre optic projector

Lamp: 150W HQI 4200oK with Energy Focus dichroic reflector

Lamp Life: 8000 hours average material painted aluminium extrusion with painted zinc plated steel.

Lumen Output 2200 lm out of 3metres of a 300 fibre bundle.

Ballast: Integral electronic features up to 2 colour wheel.

Fibre Type: PMMA or 30mm glass.

Fibre capacity: 450fibres for side emitting, and functional end emitting cable. Up to 650 fibres for decorative features (PMMA fibres).

Weight: 10kg

Op. Temp: -10°C to 35°C

Options: 3000K lamp, 1 or 2.5 rpm colour wheel .Colour synchronisation, DMX or 0-10V control strobing, mechanical dousing, colour on demand and music interface available

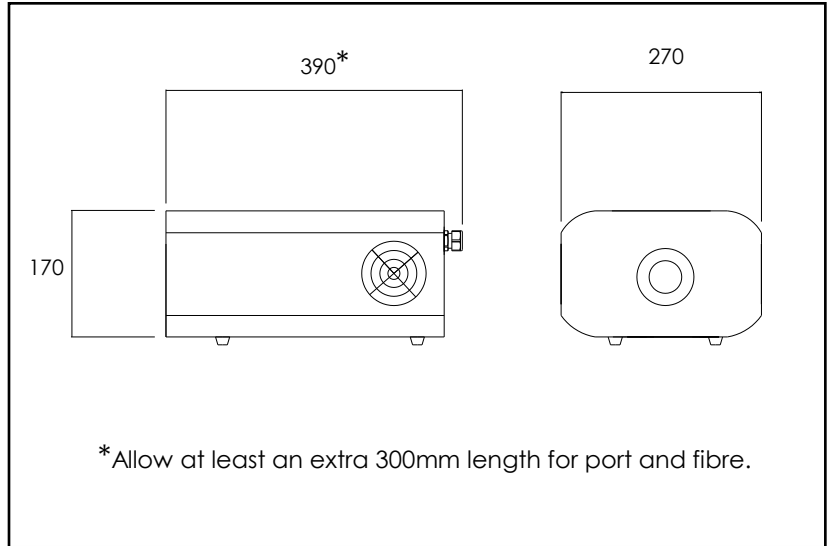
Power Consumption: 200w maximum

Primary Input Voltage 230/240/250v 50 HZ

Start Current Load 3.0 A

Current Usage: 1.8 A maximum

Colour Wheel Standard: magenta, aqua, white and green. Optional colours for 4 colour wheel: orange, light blue, dark blue, yellow, purple, salmon, dark red (specify colours and order)



Optional 8 colour wheel: aqua, dark blue, green, yellow, orange, magenta, salmon (specify colours and order) .

Colour Wheel Motor 47,000 hours MTBF

Fan 50,000 hours MTBF

Ported Ventilation 80 m³/Hour air volume

Thermal Output 234 J/Sec

Weight: 10Kg

Acoustics: 31 dBA

Storage Temperature -10 C to + 75 C

Relative Humidity 95% max. No water, liquid or heavy dust inside the illuminator.

Recommended Fuse 3.15 A Anti Surge 20 x 5mm

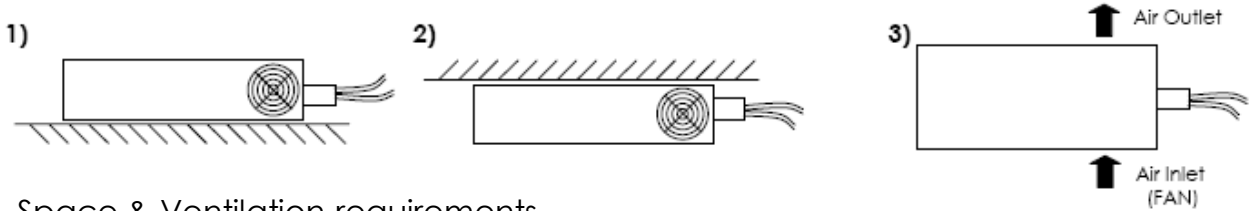
Installation: Hardwired, internal, dry with good air circulation For further details, see overleaf.

Installation considerations

The CRE6155e projector is intended for internal use only. It should be hardwired to a 220 – 250 V supply in a clean dry, dust free area.

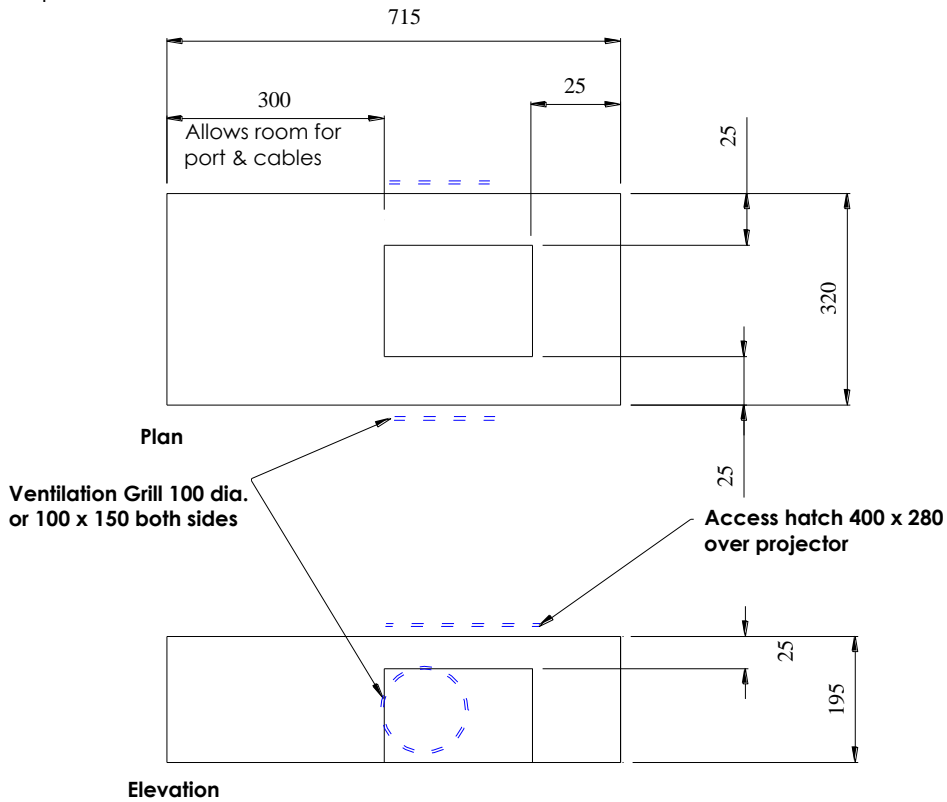
Orientation is important: there are 3 permissible orientations for the projector to be installed. These are on the floor, on the ceiling, or on the wall with the port to the right.

These are the 3 permissible positions: -

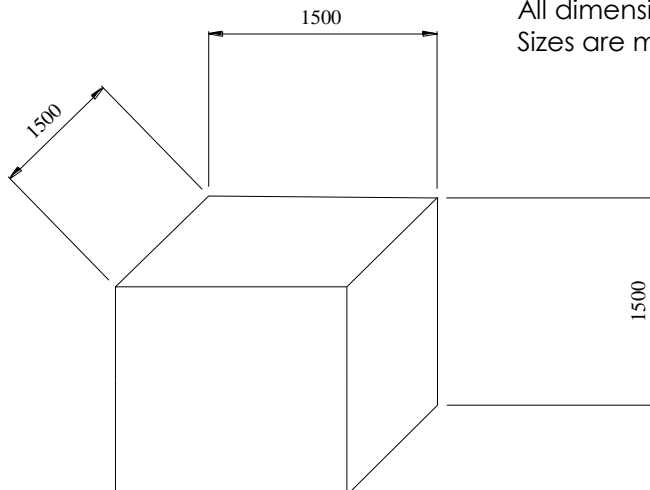


Space & Ventilation requirements

Vented spaces



Unventilated spaces



All dimensions are in mm's
Sizes are minimum recommended