

# Special Product Sheet



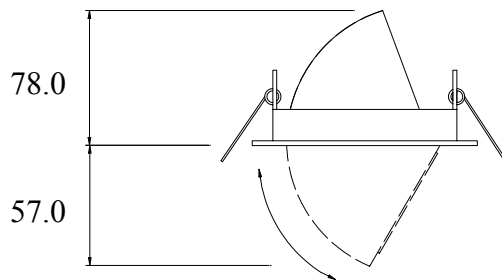
## CRE2373 LED Drop Downlight

**Fitting Body :** Die cast Aluminium Alloy

**Finish:** Black, white or Brass

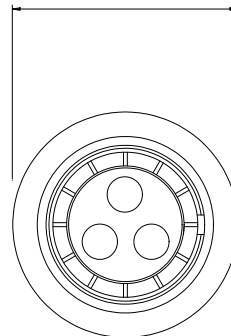
**Applications :** Accent or coloured effect lighting

**Power supply :** Use with CRE2777 control unit – runs one or two spotlights.



Cut out = 96.0 Dia.

Dia. 115.0



This die cast downlight comes complete with an MR16 module containing three Luxeon™ ‘Star’ LED’s. These are fitted with collimating lenses to give a 10 degree beam.

This MR16 module offers good output and excellent lumen maintenance – approximately 70% of original output at 50 000 hours!

Red, green, blue, Yellow & white MR16 modules are available.

Guide price - **£82.50 Contract** ( not including CRE2777 power supply) Price is dependant upon quantity

**Crescent Lighting Limited**, 8 Rivermead, Pipers Lane, Thatcham, Berkshire, RG19 4EP  
Telephone: +44 (0) 1635 878888 Facsimile: +44 (0) 1635 873888  
email address: sales@crescent.co.uk [http:// www.crescent.co.uk](http://www.crescent.co.uk)

**crescent** <sup>®</sup>  
Crescent Lighting Limited  
A Fiberstars Company